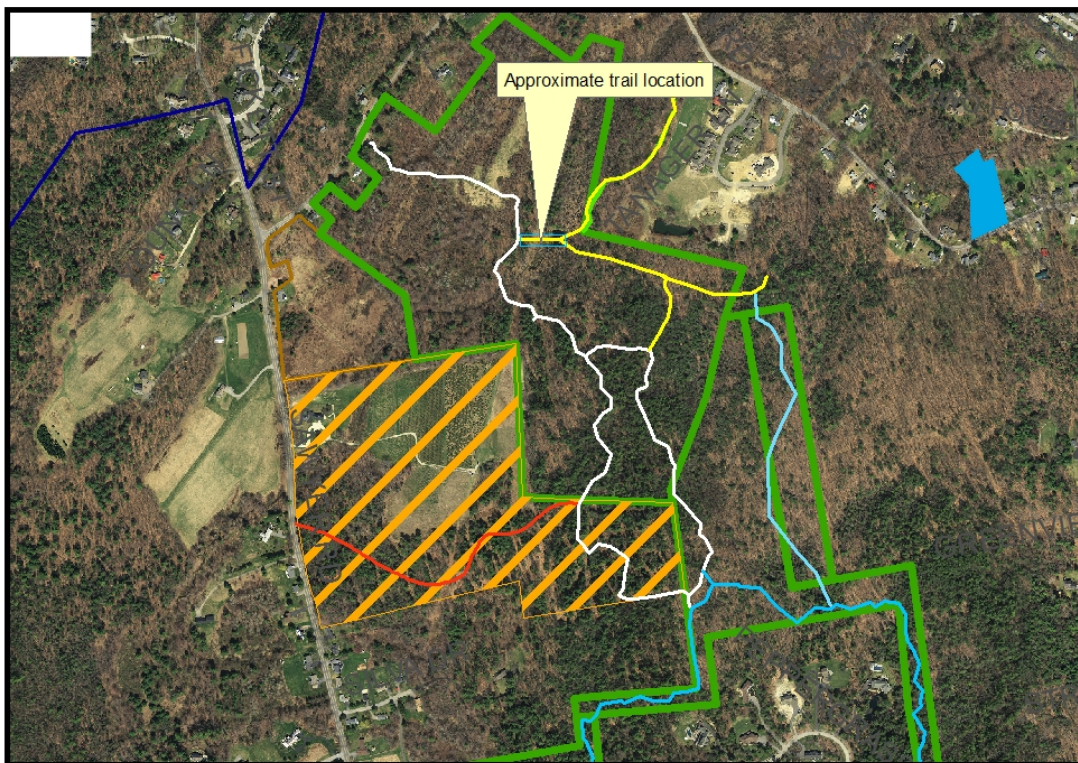


## MEMORANDUM

TO: Cape Elizabeth Town Council  
FROM: Conservation Commission  
DATE: February 2, 2015  
SUBJECT: Additional trail at Winnick Woods

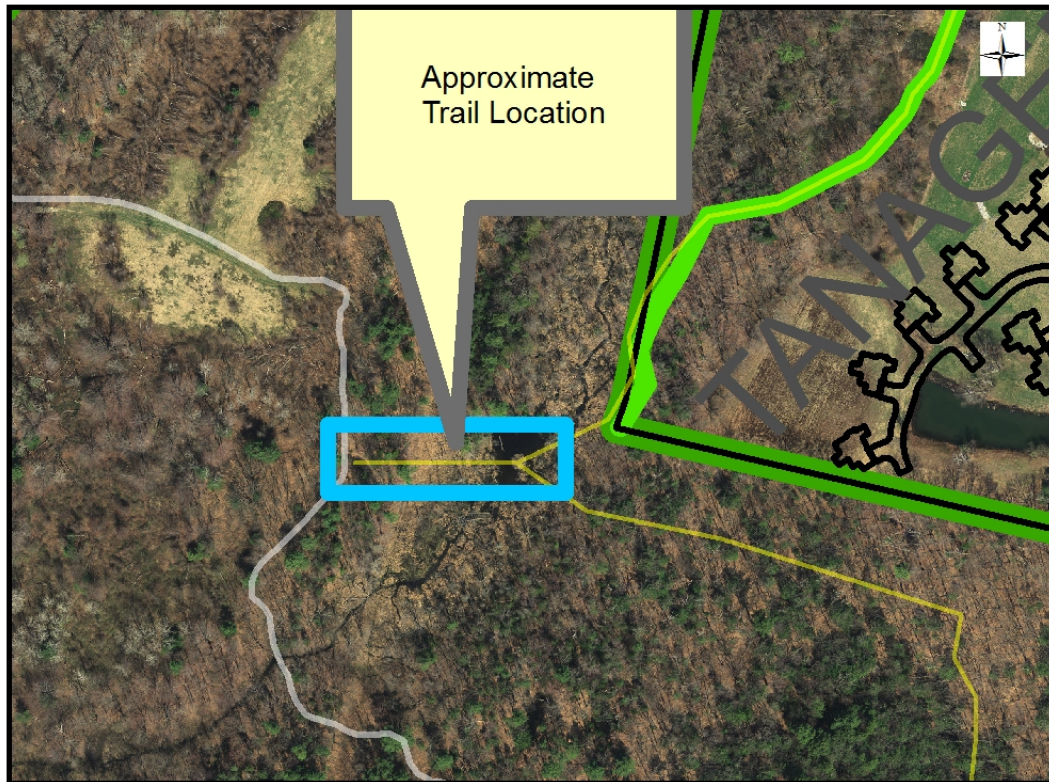
The Conservation Commission is requesting authorization to pursue permitting for an additional trail in Winnick Woods. The map below shows the area of Winnick Woods outlined in green, existing trails in white, yellow, blue, and red, and the proposed trail location.



The proposed trail formalizes an adhoc trail that is getting more use. The Conservation Commission would like to add a bridge/boardwalk over a water crossing and improve the trail to minimize impact to existing natural resources. The trail creates a short link between the main Winnick Woods Trail and a new(2014) trail connecting to Winnick Woods from Eastman Meadows. The total proposed trail length is approximately 200' and the wettest crossing about 75'.

The trail concept has been discussed by the Conservation Commission for the last few years. The commission focus at Winnick Woods has been the main trail system, both improving the trail surface and signage. The commission then worked on incorporating

the trail connection and land donations adjacent to Winnick Woods from the Eastman Meadows development. Substantial progress has been made with laying out connector trails and signage. Usage of the Winnick Woods Trail system has also increased. The commission has now returned to this trail link.



The Town has a Wetland Delineation Report prepared by Woodlot Alternatives for Winnick Woods in 2000. The trail area includes RP1 wetlands, RP1 buffer and RP2 wetlands, which is a typical landscape in Winnick Woods and on the greenbelt generally. We already know that a local Resource Protection Permit will be needed. Before committing to this new trail link, the Conservation Commission obtained an assessment from Town Engineer Steve Harding regarding permitting needed at the state level. Steve met onsite with a DEP representative, who has determined that a Permit by Rule would suffice to install the trail.

At this time, the Conservation Commission is requesting authorization to apply for local and state permits. Funding is available from the Conservation Commission annual budget. In addition, the New England Mountain Biking Association (NEMBA) has offered to fund 50% of the permitting and construction costs. With NEMBA funding, town costs should be less than \$1,000. During the installation of the trail, the Conservation Commission will work to minimize the impact to the surrounding environment.